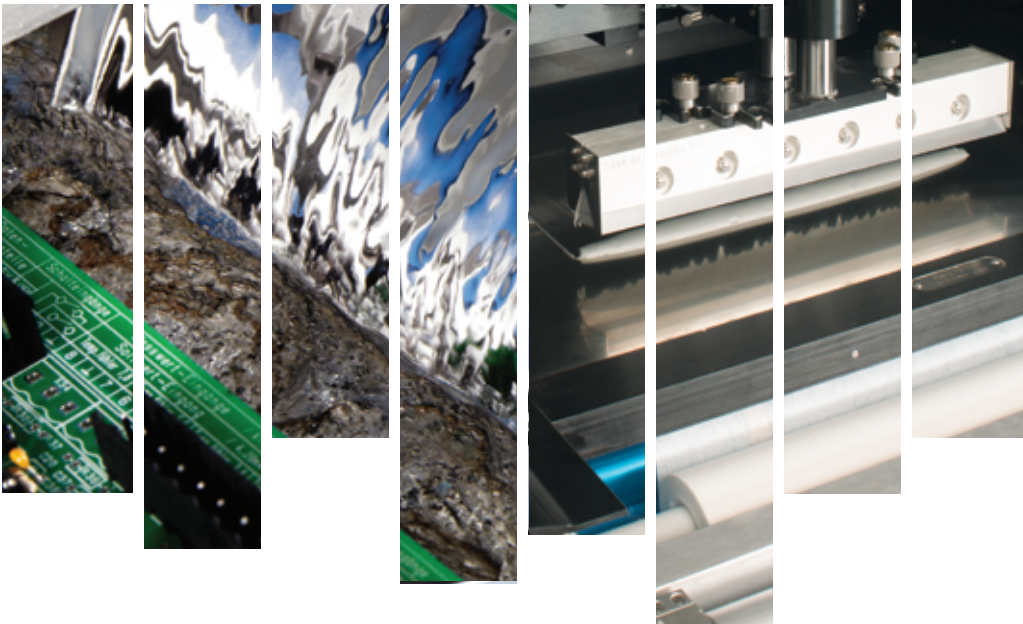
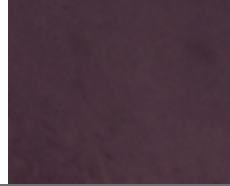
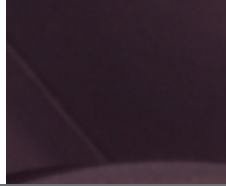


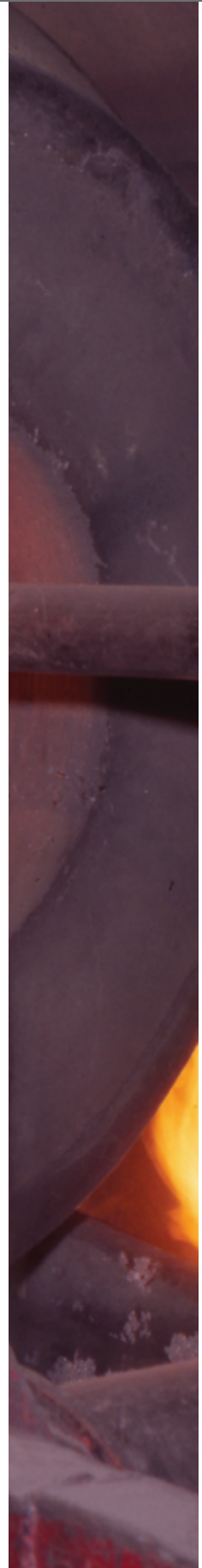
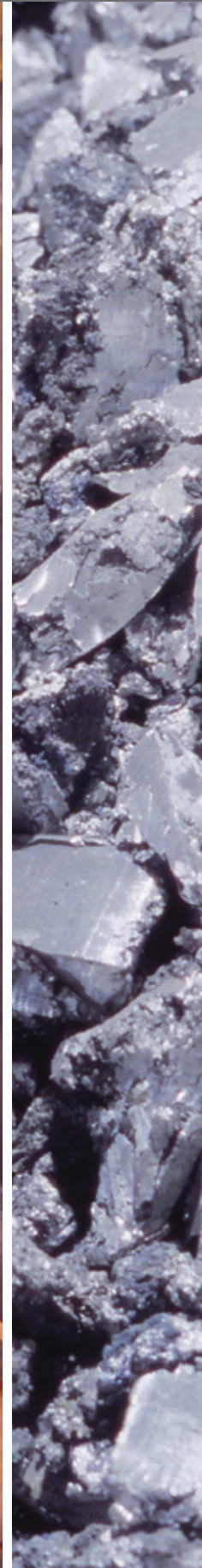


**ALPHA® METAL RECLAMATION SERVICES:
MAXIMIZE YOUR METAL RECOVERY RETURN**



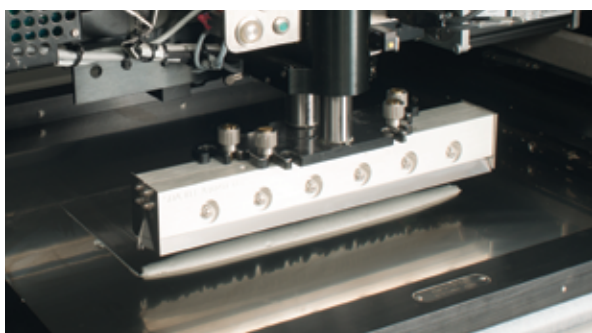
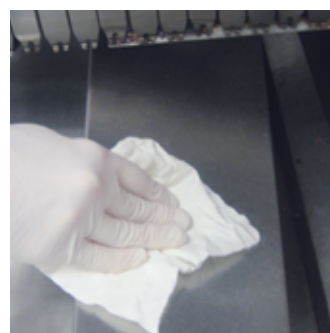


LEADING SOLDER MANUFACTURER AND RECYCLER IN NORTH AMERICA



Alpha Assembly Solutions is the only soldering materials provider in North America with in-house solder paste and reclaim capability. Our publicly held corporation offers stability and the highest financial return to our recycling customers. We have an experienced staff dedicated to reclamation efforts who maximize the amount of metal processed from your reclaim material. Our processes also remove the reclaim material from becoming part of the waste stream traditionally placed in landfills. All of the reclaim material sent to Alpha is carefully processed and no material is ever sent to a landfill.

In addition to providing tough, sealable and disposable metal recycling pails, Alpha guarantees that all shipments are lot traceable and provides audit trails to help document the safe environmental reprocessing of waste material. We welcome customers to visit our facility in Altoona, Pennsylvania to conduct your own audit of our recycling process.

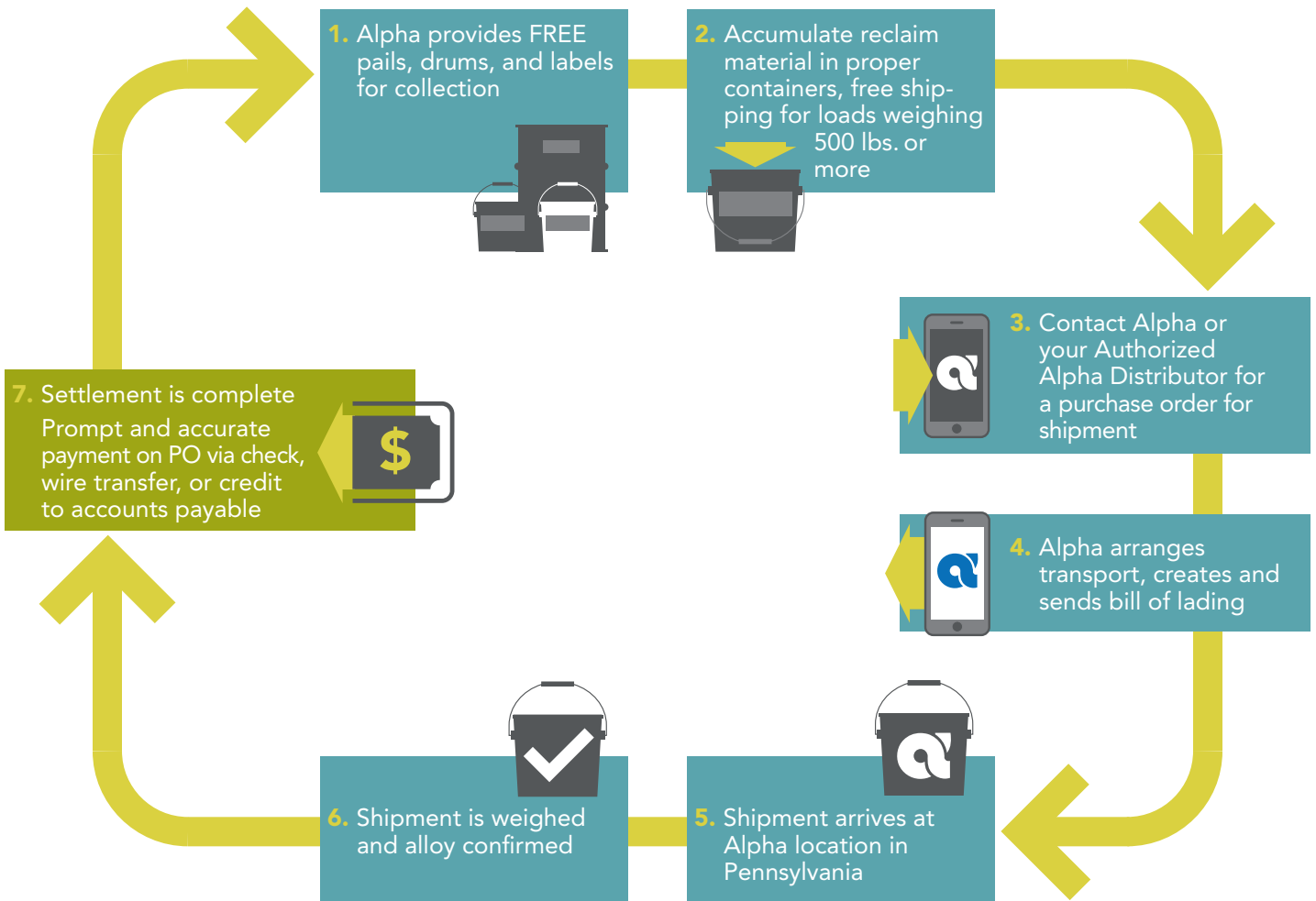


BENEFIT FROM OUR EXPERIENCE

Alpha is the largest solder manufacturer and recycler in North America.

Below is a simple guide to assist you through the collection, shipping, and payment processes.

PROCESS FLOW SUMMARY





TYPES OF RECLAIM MATERIAL TO SHIP TO ALPHA

- Unused and expired solder paste, scrap, partially filled jars
- Cartridges, syringes, gloves, wipes
- Pot dump from wave and selective soldering machines
- Dross from wave soldering
- Populated scrap boards



	2.5 Gallon Collection Pails	Gaylord	55 Gallon Drum
Unused or expired solder paste, scrap	✓		✓
Jars, cartridges, syringes, gloves, wipes		✓	✓
Pot dump	✓		
Dross	✓ (Cannot exceed 45 lbs.)		
Scrap boards (populated separated from unpopulated)		✓	✓
Cast ingots	✓		✓

AN EASY STEP-BY-STEP PROCESS

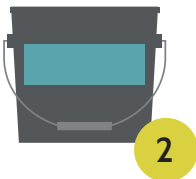


COLLECTION TIPS



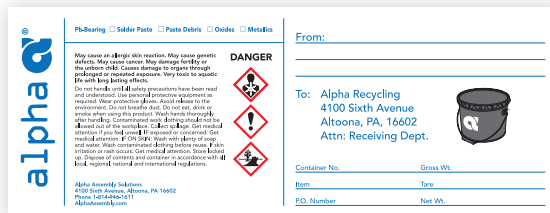
- Collect minimum of 500 lbs. of material to qualify for free shipping.
- Every container or package must have a cover and a label.
- If possible, containers should be palletized and shrink wrapped. When shipping drums, 4 drums per pallet.
- Paste should be scraped directly into collection pail.
- Empty jars, syringes, cartridges, cassettes, gloves, and wipes should be collected in a gaylord or drum.

LABELING PROCEDURES

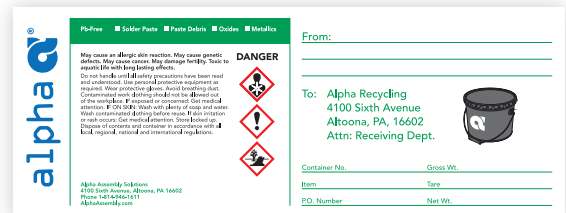


Shipping labels will be provided for all shipments and container types. Labels will correspond to the contents of the container – tin-lead/hazardous and lead-free/non-hazardous wastes. All shipments require a PO# to be included on the label. Alpha's reclaim staff will assign the PO# for your shipment.

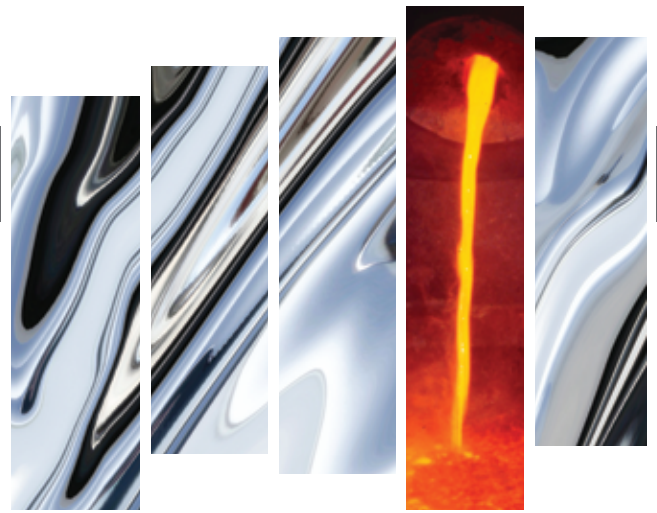
- Important to use proper label for type of reclaim material.
- Important to put PO# on each label (prevents delays upon receiving and payment).



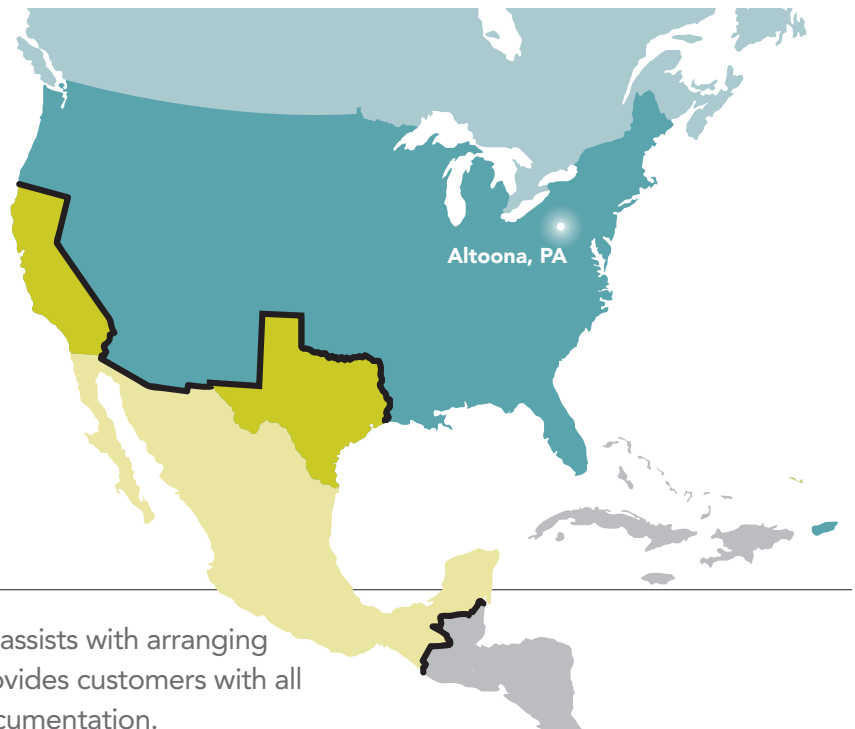
Tin-lead label (blue ink)



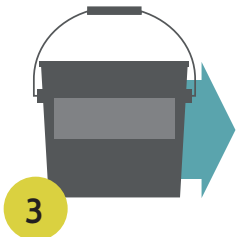
Lead-free label (green ink)



- ■ Canada and USA (except California and Texas): no manifest required
- ■ Mexico, California and Texas: manifest required



SHIPPING PROCEDURES



Alpha's Reclaim Team assists with arranging transportation and provides customers with all required shipment documentation.

Once details of shipment settled, Alpha will arrange transportation and email the required bills of lading and any additional documents that may be required for your shipment. Pick-up appointments will be coordinated with Alpha and your appointed logistics contact.

Alpha will pay the freight on all shipments over 500 lbs.

Shipments from California and Mexico must be manifested. Alpha coordinates with transportation service provider to complete all necessary documents, including manifests, if required.

PAYMENT



Alpha automated receiving process allows for prompt and accurate settlement once materials are received at reclamation facility in Altoona, Pennsylvania.

Customers may receive payment either by check, wire, or as a credit to accounts payable.

FAQs

Q: Can I ship liquids?

A: No liquids of any kind are accepted.

Q: Can I send paste flux?

A: No. There is no metal to recycle in paste flux.

Q: Is dross a hazardous waste?

A: No. It is considered a by-product of the wave soldering process, except in Mexico and California.

Q: Is paste scrap or paste debris hazardous waste?

A: No. It is considered an unused commercial chemical product, except Mexico and California.

Q: How is pricing established?

A: Pricing is based on the London Metals Exchange (LME) metals price on the day the PO is issued. For larger shipments, the price can be set the day after processing is witnessed.

Q: How do I check the London Metals Exchange (LME)?

A: You can check daily at kitco.com

Q: What trucking company will be used?

A: Alpha will select the carrier and make arrangements for pick-up.

AlphaAssembly.com **recycle@alphaassembly.com**

POs/Logistics

Contacts:

Tracy Mock

Beth McCulley

4100 6th Avenue

Altoona, PA 16602

Tel: 800-289-3797

Tel: 814-940-3837

Fax: 814-940-6752

Email:

Tracy.Mock@alphaassembly.com

Beth.McCulley@alphaassembly.com

Midwest and Southeast US

Contact: Harold Sneath

Mob: 224-213-3256

Fax: 814-940-6752

Email:

Harold.Sneath@alphaassembly.com

Northeast US and Eastern Canada

Contact: Stephanie Beech

Tel: 814-940-3838

Mob: 814-207-3442

Fax: 814-940-6752

Email:

Stephanie.Beech@alphaassembly.com

Western US and Western Canada

Contact: Patricia Mealey

Tel: 714-963-7487

Mob: 714-277-8837

Fax: 714-963-7590

Email:

Patricia.Mealey@alphaassembly.com

Brazil

Contact: Luciana Liborio Abraham

Materials Supervisor

Rua Rio Jaguarão, N° 1540 – Vila Buriti

Distrito Industrial – Manaus – Am – Brasil

Tel: 55 92 3614-7441

Tel: 55 92 8126-0008

Email:

Luciana.Liborio@alphaassembly.com

Eastern Mexico

Contact: Tereso Contreras

Gerente Nacional de Reciclaje /

National MX Reclaim Manager

Av. Nafta No.800, Parque Industrial

STIVA Aeropuerto, Apodaca NL

México 66600

Tel: 811-156-6600

Mob: +52 (81) 1412-9207

Fax: 811-156-6655

Email:

Tereso.Contreras@alphaassembly.com

Northwest Mexico

Contact: Daniel Galaviz

Gerente Regional occidental México

Av. Nafta No.800, Parque Industrial

STIVA

Aeropuerto, Apodaca N.L. México 66600

Tel: 811-156-6600

Mob: +52 (81) 1411 3547

Fax: 811-156-6655

Email:

Daniel.Galaviz@alphaassembly.com