

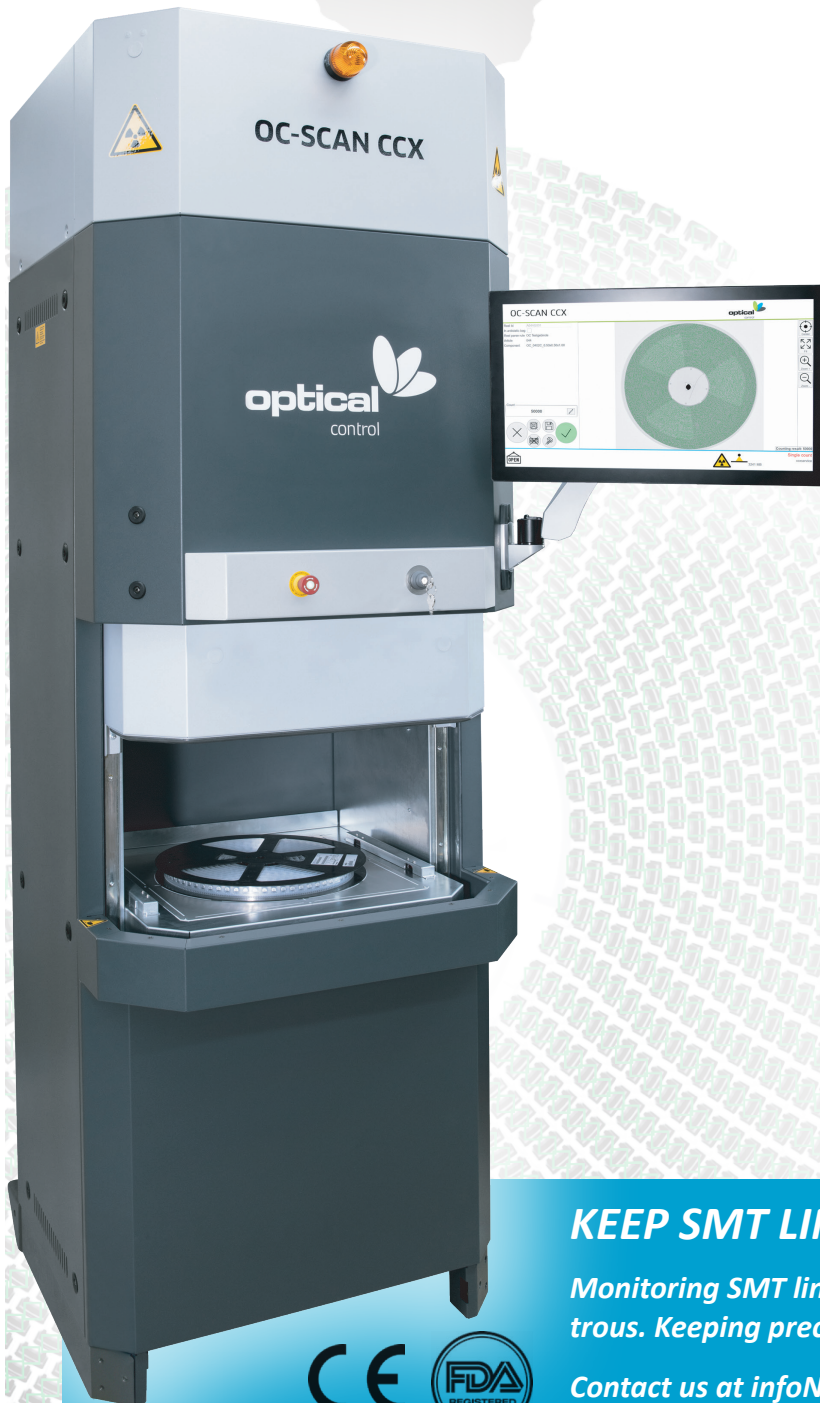
OC-SCAN[®] CCX.3

Intelligent, Simple, Fast



SMD Component Counting

*The x-ray component counter that raises the bar, from the makers of the world's **FIRST** automated counter to use x-ray technology for counting SMD reels – "OC-SCAN[®] CCX.3" from Optical Control features built-in intelligence that was, truly the first of its kind!*



Key features

- ▶ Inspection capabilities: Standard SMD, Cut-tape/snippets, JEDEC/Matrix trays, Storage tubes, ESD bags, Desiccant bags, basic PCB and other assemblies
- ▶ 99.9% accurate on most components
- ▶ Component size: Down to 01005
- ▶ Simplistic, easy to use GUI
- ▶ Industry 4.0 support
- ▶ No programming
- ▶ One button operation
- ▶ Offline s/w station available
- ▶ Auto loading/unloading unit available

Key advantages of the CCX.3

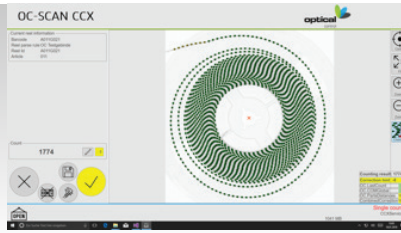
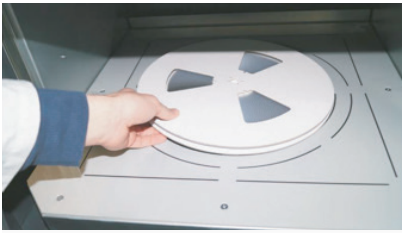
- ▶ Drastically reduce line down time
- ▶ Drastically reduce counting labor
- ▶ Eliminate counting mistakes
- ▶ More productive use of manpower
- ▶ Direct link to factory ERP/MES
- ▶ Direct link to storage units

KEEP SMT LINES RUNNING

Monitoring SMT lines is critical. Running out of components is disastrous. Keeping precise control of inventory should be a daily routine.

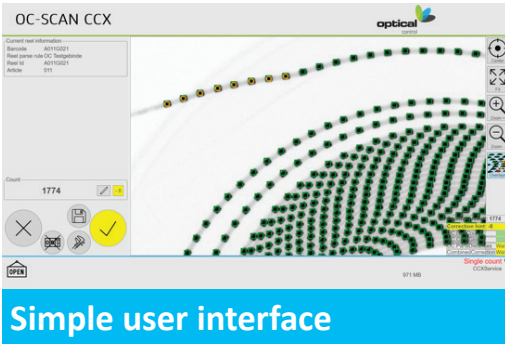
Contact us at infoNA@optical-control.com or 1-833-We-Count (1-833-932-6868) www.optical-control.com



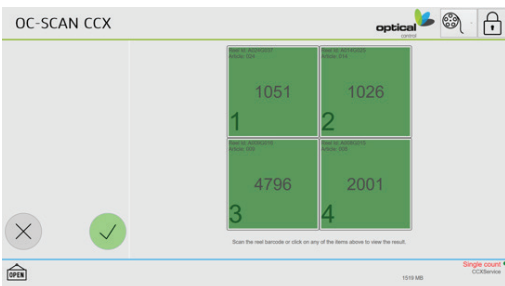


10-15 Seconds
ERP
 ENTERPRISE RESOURCE PLANNING

Increased productivity based on precise inventory knowledge



Simple user interface



Quad count mode

OC-SCANCCX

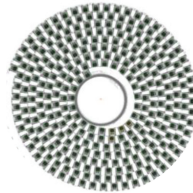
Inventory report: Reels grouped by article



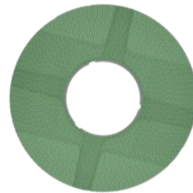
Name: Inventory 2017
 Description: <no data>
 Begin: 1/18/2018 End: 01.12.9279 Base data deleted: No

| Article | Reel count | CCXService | 1/18/2018 11:12:00AM |
|-------------|--------------|-------------|----------------------|
| Article 008 | | | |
| A008G015 | 2,001 | CCXService | 1/18/2018 11:12:00AM |
| | Reel count 1 | Total stock | 2,001 |
| Article 009 | | | |
| A009G016 | 4,791 | CCXService | 1/18/2018 11:13:15AM |
| A009G017 | 5,002 | CCXService | 1/18/2018 11:13:55AM |
| | Reel count 2 | Total stock | 9,793 |
| Article 011 | | | |
| A011G021 | 1,776 | CCXService | 1/18/2018 11:12:28AM |
| A011G020 | 1,778 | CCXService | 1/18/2018 11:12:51AM |
| | Reel count 2 | Total stock | 3,554 |
| Article 019 | | | |
| A019G031 | 704 | CCXService | 1/18/2018 11:07:45AM |
| | Reel count 1 | Total stock | 704 |
| Article 024 | | | |
| A024G037 | 1,051 | CCXService | 1/18/2018 11:13:30AM |
| | Reel count 1 | Total stock | 1,051 |

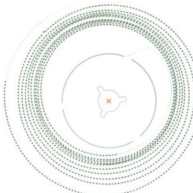
Reporting



Connectors



01005's



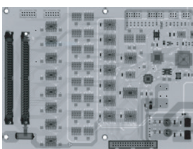
Loose reels



Cut tape



Snippets



Basic PCB



JEDEC/Matrix

Highlights of the CCX.3

- ▶ True plug-n-play with Automatic algorithms (No cumbersome library required)
- ▶ About 10 seconds per single reel (up to 17")
- ▶ About 20 seconds to count (4) 7" reels
- ▶ About 10 seconds to count trays and tubes
- ▶ Counts loose, cut tape snippets
- ▶ Counts through sealed ESD bags
- ▶ Counts through most desiccant bags
- ▶ Inventory/counting and reporting
- ▶ 1D/2D barcode reading
- ▶ Configurable label printing
- ▶ Basic 2D inspection of PCB assemblies

Facility

- ▶ Size: 28" x 30" x 87"
(70cm x 75cm x 220cm)
- ▶ Weight: 790 lbs (360 kg)
- ▶ Power: 110-220 V, 50/60 Hz, 1000W (plug into standard outlet)

Basic information

- ▶ Operating system: Windows 10 professional – Touch panel display

optical
 control
 infoNA@optical-control.com
 1-833-We-Count
 (1-833-932-6868)
 www.optical-control.com