

Superior Clamping and Gripping



Depaneling Technology

The Fastest Depaneling Technology
in Electronic Production



Superior Clamping and Gripping

Jens Lehmann stands for safe, precise gripping and holding. As a brand ambassador of the SCHUNK team, the No. 1 goalkeeper represents our global competence leadership for clamping technology and gripping systems. The top performance of SCHUNK and Jens Lehmann are characterized by dynamics, precision, and reliability.

For more information visit our website:
www.de.schunk.com/Lehmann



J. Lehmann
Jens Lehmann





Henrik A. Schunk, Kristina I. Schunk, brand ambassador Jens Lehmann, and Heinz-Dieter Schunk

Top Performance in the Team

SCHUNK is the world's No. 1 for clamping technology and gripping systems – from the smallest parallel gripper to the largest chuck jaw program.

In order to boost efficiency, SCHUNK customers have bought more than 2,000,000 precision toolholders, 1,000,000 SCHUNK grippers, and 100,000 lathe chucks and stationary workholding systems so far.

This makes us proud and motivates us to attain new top performances.

As a competence leader, we recognize and develop standards with a large potential for the future, which will drive the rapid progress in many industries.

Our customers profit from the expert knowledge, the experience, and the team spirit of more than 2,700 employees in our innovative family-owned company.

The Schunk family wishes you improved end results with our quality products.



Heinz-Dieter Schunk



Henrik A. Schunk



Kristina I. Schunk

Depaneling Technology

Overview

Two concepts for the complete spectrum of depaneling technology

Increasing speed, maximum accuracy – ongoing advancements in PCB technology mean manufacturers of electronic modules continually face new challenges, which in turn place more demands on depaneling technology. Its performance at the end of each modern production process is decisive for efficiency and productivity.

The flexible universal depaneling machines from SCHUNK set new standards with precision, speed and process stability for the entire spectrum of customer requirements. The cutting is performed by using either a sawing disc or a milling bit – with low stress impact, efficiently, and without damaging the components unlike conventional cutting processes.

Universal

All-purpose machine for low and high batches and medium to high product variety. Multi-panels and individual PCBs are loaded and unloaded manually.

Fully automatic

Inline machines for high batches and low product variety: short cycle times, high positioning accuracy and an option for palletizing.



SAR-1300-BD 2-Uni

ILR-2000-B with palletizing system PAL-1400



Gripping of several individual PCBs in the panel with a modular multi-gripper, consisting of several PGN-plus grippers, followed by detaching or placing it in the following process in a programmed angular position. Transfer of pneumatic and the sensor signals for rotation of the ERD torque module is performed by a rotary feed-through.

Our Performance Promise. Your Benefit.

- The input power of a two shuttle machine with manual loading and unloading is only **800 W**.
- **Very precise milling contours** by means of high positioning accuracy (± 0.02 mm) of the axes and the precise workpiece holder.
- Due to the highly dynamic linear motors, SCHUNK depaneling machines achieve an approximately **50% higher throughput** than comparable machines of the competitors.
- High technical availability and process stability: SCHUNK inline depaneling machines are proven to reach an **availability of $\geq 98\%$** .
- Further increase of availability through **low-maintenance axes**.
- Both cutting principles (milling/sawing) can be retrofitted for the SAR-1300 model with **low effort** at any time. That means the machine grows with the changing needs.

Universal Depaneling System

SAR-1300-Uni

Universal depaneling machine SAR-1300-Uni

The universal one is growing with the requirements due to its modular design.

The SAR-1300-Uni depaneling system is ideal for small to large batch sizes with medium to high product variety. Ongoing advancements in PCB technology mean manufacturers of electronic modules continually face new challenges, which in turn place more demands on depaneling technology. The design of the SAR-1300-Uni includes a variety of customer suggestions and requirements.

Outstanding feature of the SAR-1300-Uni is its modularity, and the involved fast and modular option of fitting the router. Due to the vast modular design, the machine can be fitted with milling bit and milling disc modules or from a single shuttle system to a double shuttle system. Numerous accessories and options, such as camera system, data base connection or magnetic workpiece holder allow the cost-optimized future adaption of the machine at any time.

35% lower cycle time

The fastest depaneling machine on the market, with axes speed up to 2,000 mm/s.



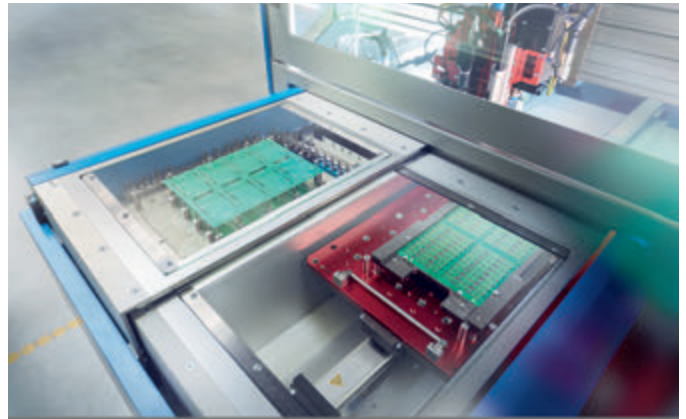
SAR-1300-BD 2-Uni

Flexible and efficient:

- Shortest cycle times thanks to the high speed linear motors from SCHUNK's own product line and minimal down times.
- Highest milling accuracy due to very precise linear motors from SCHUNK's own product line and latest control technology.
- Maximum availability due to use of high-quality components and simple system structure.
- Cost-effective due to simple structure and targeted initial investment with wide range of expansion options.
- Possible to feed in panels with one or two shuttle axes depending on the required output. The second shuttle can be retrofitted at any time.



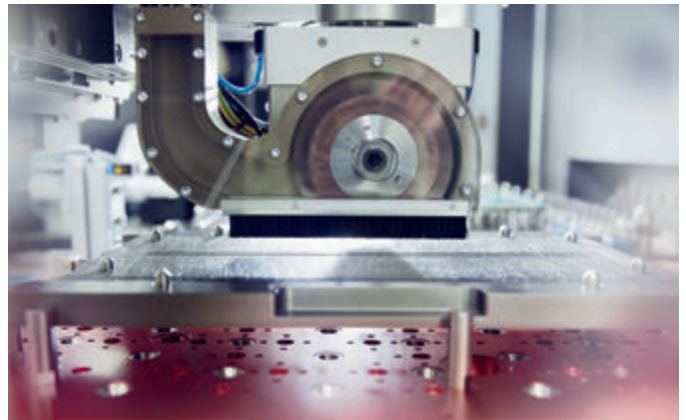
The standard version of the SAR-1300-Uni has a high-performance single shuttle system.



When equipped with a dual shuttle system, the machine offers maximum output by increasing efficiency



The basic configuration consists of a milling bit module. As optional expansion of the base system, the milling bit module is available with a vision system, as well as a scanner.



The machine can be optionally fitted with an additional sawing disc module. The second module can be retrofitted at any time. The sawing disc can be rotated in steps of 0.1° until 360°. With the full equipment (milling bit module + sawing disc module) it is possible to switch instantly during one cycle, without retooling time, between both heads.

Inline Depaneling System

ILR-1500-B and ILR-2000-B

Inline depaneling machine ILR-1500-B and ILR-2000-B

The Fully Automatic for large batch sizes and minimal product variety.

The Inline depaneling systems ILR-1500-B and ILR-2000-B with optional palletizing system PAL-1400 were designed specifically for almost stressfree depaneling. The main focus was for high flexibility and throughput.

With the specially designed fast-acting PCB feeder for the ILR-2000-B and the use of highly dynamic actuators with continuous path control for detachment and handling of PCBs, the highest possible throughput is achieved. The simple and light-weight design of the PCB grippers minimizes tool costs and together with a gripper change system guarantees highest flexibility and minimum set-up time.



150 % faster loading times

Thanks to the specially designed fast acting panel feeder unbeatable in the throughput.

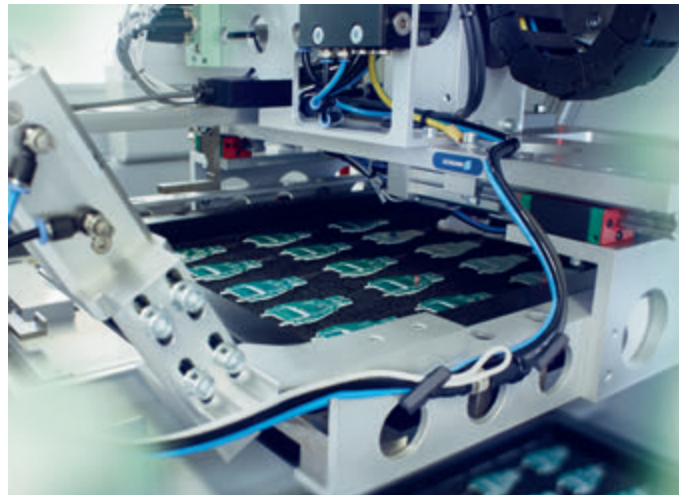
ILR-2000-B with palletizing system PAL-1400

Automatically efficient:

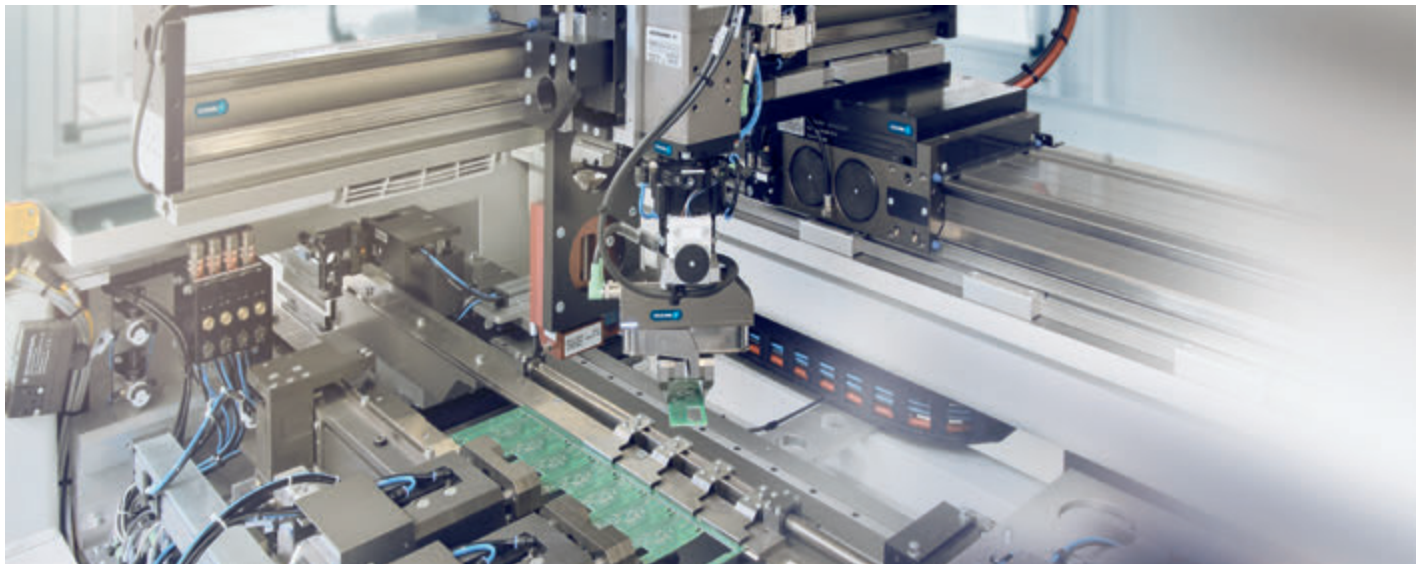
- Decreased loading time due to the linear motor driven panel infeed conveyor
- Shortest possible detachment time guaranteed by highly dynamic milling gantry system with linear motor actuators with special milling brush hold-down
- Short handling time for detached components achieved by linear motor based handling system with continuous path control
- High flexibility and minimum set-up time with simple and automatic quick change multi-panel grippers
- Optional expansion by integrated palletizing system



Simple and light-weight grippers for PCB handling are cost effective and guarantee the shortest cycle times with the most flexibility.



The linear motor handling system detects the status of the tray with a light barrier and guarantees trouble free operation with various types of trays.



With the specially designed fast acting panel feeder, loading times of less than 2 seconds are achieved at the panel infeed section.

MAGNOPLATE

An optional accessory for the depaneling machine. In cases of high product variety, substantial savings of fixture costs can be achieved.

Customized pin geometries and pin diameters can be offered depending on the application and multi-panel design. The options of using hold down devices and pin fixing can be solved by integrating a fixation plate into the system.



		SAR-800-B1-CL	SAR-1300-Uni	ILR-1500/2000	ILR-1000-CL	ILR-2800
Machine dimensions						
Length	[mm]	800	1325	1550/2050	1000	2800
Width	[mm]	1810	1300	1960	1500	1880
Height	[mm]	1850		2020	2150	2020
Operator height	[mm]	985	950	940		
Weight	[kg]	700	1500	1700/2000	1600	3500
Speed of axes (mm/s)						
X- and Y-linear motor actuators	[mm/s]	2000				
Z-linear motor actuator	[mm/s]	1000				
Accuracy						
Repeat accuracy	[mm]	±0.02				
Positioning accuracy	[mm]	±0.02				
Milling accuracy without vision system	[mm]	±0.13				
Milling accuracy with vision system	[mm]	±0.08				
Work space						
Max. panel size X- and Y-direction	[mm]	430 x 350	400 x 300	380 x 250	430 x 350	
PCB-characteristics						
PCB thickness	[mm]	0.5 – 3.2 (further PCB data on request)				
Max. component height on top side with standard spindle	[mm]	10			10	
Max. component height on top side with strong spindle	[mm]	15 – 20				
Max. component height on non milling side	[mm]	60	30	60		
PCB materials		CEM1, FR2, FR3, FR4, FR5 (further PCB materials on request)				
Availability						
Technical availability		≥98%				
Noise level						
Measured at a distance of 1.2 m around the machine		≤72 db (A)				
System control						
IPC control with DIN 66025 programming		✓				
Windows operating system		standard				
Power supply						
Voltage		400 V/50 Hz/16 A				
Compressed air		0,6 mPa (6 bar)				
Ambient temperature		+18 °C bis +35 °C				
Relative air humidity		15% bis 80%				
RCD > 100 mA: Connection over RCD not possible (please contact SCHUNK)		✓				
Options (most common ones)						
Strong spindle		●	●	standard	●	standard
MAGNOPLATE		●	●			●
Automatic tool break control and broken tool control		●	●	standard	standard	standard
Diameter control		●	●	●	●	●
Milling brush holding-down device		standard				
Milling bit head		standard	●	standard	standard	●
Sawing disc head			●			●
Two shuttle system			●			●
One shuttle system		standard	●			●
Fast acting panel feeder				●		
Palettizing system				●	●	●
Combination between milling bit head and sawing disc head			●			●
Detection of good and bad parts		●	●	●	●	●
Traceability		●	●	●	●	●
Vision system for program teaching		●	●			
Vision system for recognition of PCB position		●	●	●	●	●
CAD/CAM software for generating of milling program		●	●	●	●	●

● available as optional accessory



Lauffen/Neckar

SCHUNK GmbH & Co. KG | Spann- und Greiftechnik
 Bahnhofstr. 106 - 134 | 74348 Lauffen/Neckar
 Tel. +49-7133-103-0
 Fax +49-7133-103-2399
info@de.schunk.com | www.schunk.com



Brackenheim-Hausen

SCHUNK GmbH & Co. KG | Spann- und Greiftechnik
 Wilhelm-Maybach-Str. 3 | 74336 Brackenheim-Hausen
 Technical Sales +49-7133-103-2503
 Technical Support +49-7133-103-2696 Fax
 +49-7133-103-2189
automation@de.schunk.com | www.schunk.com



Mengen

H.-D. SCHUNK GmbH & Co. Spanntechnik KG Lothringer
 Str. 23 | 88512 Mengen
 Tel. +49-7572-7614-0
 Fax +49-7572-7614-1039
futter@de.schunk.com | www.schunk.com



St. Georgen

SCHUNK Electronic Solutions GmbH
 Am Tannwald 17 | 78112 St. Georgen
 Tel. +49-7725-9166-0
 Fax +49-7725-9166-5055
electronic-solutions@de.schunk.com | www.schunk.com



Huglfing

SCHUNK Montageautomation GmbH
 Auwiese 16 | 82386 Huglfing
 Member of SCHUNK Lauffen
 Tel. +49-8802-9070-30
 Fax +49-8802-9070-340
info@de.schunk.com | www.schunk.com



Your local technical consultant [www.schunk.com/](http://www.schunk.com/services/ansprechpartner/aussendienst)
[services/ansprechpartner/aussendienst](http://www.schunk.com/services/ansprechpartner/aussendienst)

International



Morrisville, North Carolina, USA

SCHUNK Intec Inc.
 211 Kitty Hawk Drive | Morrisville, NC 27560
 Tel. +1-919-572-2705
info@us.schunk.com
www.schunk.com



Switzerland

GRESSEL AG
 Schützenstr. 25 | 8355 Aadorf
 Tel. +41-52-368-16-16
 Fax +41-52-368-16-17



Caravaggio, Italy

S.P.D. S.p.A.
 Via Galileo Galilei 2/4 | 24043 Caravaggio (BG)
 Tel. +39-0363-350360
 Fax +39-0363-52578

Copyright: All text drawings and product illustrations are subject to copyright and are the property of SCHUNK GmbH & Co. KG

Technical Changes: The data and illustrations in this catalog are not binding and only provide an approximate description. We reserve the right to make changes to the product delivered compared with the data and illustrations in this catalog, e.g. in respect of technical data, design, fittings, material and external appearance.

SCHUNK Service



Competent and skilled personnel ensure optimal availability of your SCHUNK products, and make sure that their value will be maintained.

Your Advantage:

- Fast supply of original spare parts
- Reduction of down-times
- The complete spectrum of components from one source
- Quality and availability that can only be guaranteed by the original manufacturer
- 12-month warranty



Initial Operation

- Professional assembly
- Fast and trouble-free



Inspection

- Inspection is carried out by skilled service engineers
- Avoiding unplanned failures of workholding and toolholding equipment



Maintenance

- Regular maintenance carried out by skilled service engineers
- Increasing and ensuring the availability of your workholding and toolholding equipment



Repairs

- Short down-times due to fast intervention of the SCHUNK service engineers
- Spare parts and accessories

Training

- Fast and practical training
- Efficient use of your SCHUNK products by training of the operating personnel
- The basis for proper machining of workpieces
- Ensures longevity of your SCHUNK products

Individual Service – for better results

- Hotline to our inside technical consultants weekdays from 8 a.m. to 5 p.m.
- Project-oriented and on-site technical advice at your location
- Training on innovations and SCHUNK products – across the world in our local subsidiaries



Germany – Head Office

SCHUNK GmbH & Co. KG
Spann- und Greiftechnik
Bahnhofstr. 106 – 134
74348 Lauffen/Neckar
Tel. +49-7133-103-0
Fax +49-7133-103-2399
info@de.schunk.com
www.schunk.com



Austria

SCHUNK Intec GmbH
Friedrich-Schunk-Straße 1
4511 Allhaming
Tel. +43-7227 223 99-0
Fax +43-7227 210 99
info@at.schunk.com
www.at.schunk.com



Belgium, Luxembourg

SCHUNK Intec N.V./S.A.
Industrielaan 4 | Zuid III
9320 Aalst-Erembodegem
Tel. +32-53-853504
Fax +32-53-836351
info@be.schunk.com
www.be.schunk.com



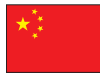
Brazil

SCHUNK Intec-BR
Av. Santos Dumont, 733
BR 09015-330 Santo André – SP
Tel. +55-11-4468-6888
Fax +55-11-4468-6883
info@br.schunk.com
www.schunk.com



Canada

SCHUNK Intec Corp.
370 Britannia Road E, Units 3
Mississauga, ON L4Z 1X9
Tel. +1-905-712-2200
Fax +1-905-712-2210
info@ca.schunk.com
www.ca.schunk.com



China

SCHUNK Intec Precision Machinery Trading
(Shanghai) Co., Ltd.
Xinzhuan Industrial Park,
1F, Building 1, No. 420 Chundong Road,
Minhang District
Shanghai 201108
Tel. +86-21-54420007
Fax +86-21-54420067
info@cn.schunk.com
www.cn.schunk.com



Czech Republic

SCHUNK Intec s.r.o.
Tuřanka 115 | CZ 627 00 Brno
Tel. +420-513 036 213
Fax +420-513 036 219
info@cz.schunk.com
www.cz.schunk.com



Denmark

SCHUNK Intec A/S
c/o SCHUNK Intec AB
Morabergsvägen 28
152 42 Södertälje Sweden
Tel. +45-43601339
Fax +45-43601492
info@dk.schunk.com
www.dk.schunk.com



Finland

SCHUNK Intec Oy
Hatanpään valtatie 34 A/B
33100 Tampere
Tel. +358-9-23-193861
Fax +358-9-23-193862
info@fi.schunk.com
www.fi.schunk.com



France

SCHUNK Intec SARL
Parc d'Activités des Trois Noyers
15, Avenue James de Rothschild
Ferrières-en-Brie
77614 Marne-la-Vallée, Cedex 3
Tel. +33-1-64663824
Fax +33-1-64663823
info@fr.schunk.com
www.fr.schunk.com



Great Britain, Ireland

SCHUNK Intec Ltd.
Cromwell Business Centre
10 Howard Way
Interchange Park
Newport Pagnell MK16 9QS
Tel. +44-1908-611127
Fax +44-1908-615525
info@gb.schunk.com
www.gb.schunk.com



Hungary

SCHUNK Intec Kft.
Széchenyi út. 70. | 3530 Miskolc
Tel. +36-46-50900-7
Fax +36-46-50900-6
info@hu.schunk.com
www.hu.schunk.com



India

SCHUNK Intec India Private Ltd.
80 B, Yeshwanthpur, Industrial Suburbs
Bangalore 560022
Tel. +91-80-40538999
Fax +91-80-40538998
info@in.schunk.com
www.in.schunk.com



Indonesia

Trade Representative Office of
SCHUNK Intec Pte. Ltd.
JL Boulevard Utama BSD
Foresta Business Loft 1 Blok C no. 16
Tangerang, 15339
Tel. +6221-3003-2993
Fax +6221-3003-2995
info@id.schunk.com
www.schunk.com



Italy

SCHUNK Intec S.r.l.
Via Barozzo | 22075 Lurate Caccivio (CO)
Tel. +39-031-4951311
Fax +39-031-4951301
info@it.schunk.com
www.it.schunk.com



Japan

SCHUNK Intec K.K.
Minamishinagawa JN Bld. 1F
2-2-13 Minamishinagawa
Shinagawa-ku Tokyo 140-0004, Japan
Tel. +81-3-6451-4321
Fax +81-3-6451-4327
info@jp.schunk.com
www.jp.schunk.com



Mexico

SCHUNK Intec S.A. de C.V.
Calle Pirineos # 513 Nave 6
Zona Industrial Benito Juárez
Querétaro, Oro. 76120
Tel. +52-442-211-7800
Fax +52-442-211-7829
info@mx.schunk.com
www.mx.schunk.com



Netherlands

SCHUNK Intec B.V.
Titaniumlaan 14
5221 CK 's-Hertogenbosch
Tel. +31-73-6441779
Fax +31-73-6448025
info@nl.schunk.com
www.nl.schunk.com



Norway

SCHUNK Intec AS
Dyrfløkkeveien 13 | 1448 Drøbak
Tel. +47-210-33106
Fax +47-210-33107
info@no.schunk.com
www.no.schunk.com



Poland

SCHUNK Intec Sp. z o.o.
ul. Puławska 40A
05-500 Piaseczno
Tel. +48-22-7262500
Fax +48-22-7262525
info@pl.schunk.com
www.pl.schunk.com



Russia

SCHUNK Intec 000
ul. Belloostrovskaya, 17, korp. 2, lit. A
St. Petersburg, 197342
Tel. +7-812-326-78-35
Fax +7-812-326-78-38
info@ru.schunk.com
www.ru.schunk.com



Singapore

SCHUNK Intec Pte. Ltd.
25 International Business Park
#03-51/52 German Centre
Singapore 609916
Tel. +65-6240-6851
Fax +65-6240-6852
info@sg.schunk.com
www.sg.schunk.com



Slovakia

SCHUNK Intec s.r.o.
Levická 7 | SK-949 01 Nitra
Tel. +421-37-3260610
Fax +421-37-3260699
info@sk.schunk.com
www.sk.schunk.com



South Korea

SCHUNK Intec Korea Ltd
#1207 ACE HIGH-END Tower 11th,
361 Simin-daero, Dongan-gu,
Anyang-si, Geonggido, 14057, Korea
Tel. +82-31-382-6141
Fax +82-31-382-6142
info@kr.schunk.com
www.kr.schunk.com



Spain, Portugal

SCHUNK Intec S.L.U.
Avda. Ernest Lluch, 32
TCM 3-6.01, ES-08302 Mataró (Barcelona)
Tel. +34-937 556 020
Fax +34-937 908 692
info@es.schunk.com
www.es.schunk.com



Sweden

SCHUNK Intec AB
Morabergsvägen 28
152 42 Södertälje
Tel. +46-8 554 421 00
Fax +46-8 554 421 01
info@se.schunk.com
www.se.schunk.com



Switzerland, Liechtenstein

SCHUNK Intec AG
Im Ifang 12 | 8307 Effretikon
Tel. +41-52-35431-31
Fax +41-52-35431-30
info@ch.schunk.com
www.ch.schunk.com



Turkey

SCHUNK Intec Bağlama Sistemleri ve
Otomasyon San. ve Tic. Ltd. Şti.
Küçükyalı İş Merkezi, Girne Mahallesi
İrmak Sokak, A Blok, No: 9
34852 Maltepe | İstanbul
Tel. +90-216-366-2111
Fax +90-216-366-2277
info@tr.schunk.com
www.tr.schunk.com



USA

SCHUNK Intec Inc.
211 Kitty Hawk Drive
Morrisville, NC 27560
Tel. +1-919-572-2705
info@us.schunk.com
www.us.schunk.com



Australia
Romheld Automation PTY. LTD.
Unit 30 | 115 Woodpark Road
Smithfield NSW 2164
Tel. +61-2-97217799
Fax +61-2-97217766
sales@romheld.com.au
www.romheld.com.au



Chile
Comercial Araneda y CIA. LTDA.
Quinta Normal
Vargas Fontecilla # 4550 | Santiago
Tel. +56-2-7248123
Fax +56-2-7102036
caraneda@rotar.cl | www.rotar.cl



Colombia
Cav -
Control y Automatización Virtual Ltda.
43 Oficina 101 Avenida Esperanza N. 72B
Bogotá D.C.
Tel. +57-1-6608719
Fax +57-1-4109846
info@cavingenieros.com
www.cavingenieros.com

MIKRA CAD CAM GAE, LTDA
AC-3 # 310-87, Bogotá
Tel. +571-201-6379



Costa Rica
RECTIFICACION ALAJUENSE, S.A.
100m al Oeste y 75m al Sur del
Cementerio Central de Alajuela, Alajuela
Tel. +506-2430-5111



Croatia
Bibus Zagreb d.o.o.
Anina 91 | 10000 Zagreb
Tel. +385-21-228449
Fax +385-21-228464
info@bibus.hr | www.bibus.hr

Okret d.o.o.
Majurina 16 | 21215 Kastel Luksic
Tel. +385-21-228449
Fax +385-21-228464
okret@okret.hr



Ecuador
ELIMED CIA. LTDA.
Calle El Progreso 0E1-111 y Manglaralto
Quito
Tel. +59-39-7784740



Estonia
DV-Tools OÜ
Peterburi tee 34/4 | 11415, Tallinn
Mobile Phone +372-56-655954
Fax +372-6030508
info@dv-tools.ee



Greece
Georg Gousoulis Co. O.E.
27, Riga Fereou Str.
14452 Metamorfofi-Athens
Tel. +30-210-2846771
Fax +30-210-2824568
mail@gousoulis.gr | www.gousoulis.gr



Iceland
Formula 1 ehf
Breidamörk 25 | P.O. Box 1 61
810 Hveragerði
Tel. +354-5172200 | Fax +354-5172201
formulat1@formulat.is



Indonesia
PT. Metaltech Indonesia
Jl. Gatot Subroto Km 8 | Tangerang 15136
Tel. +6221-55657435
Fax +6221-5918553
info@metaltechindonesia.com
www.metaltechindonesia.com



Iran
Iran Int. Procurement of Industries Co.
(I.I.P.I.)
No. 10, First alley, Golshan St.,
Khoramshahr Ave. | Tehran, 1554814771
Tel. +98-21-88750965
Fax +98-21-88750966
info@iipico.com



Israel
Ilan and Gavish Automation Service Ltd.
26, Shenkar St. | Qiryat-Arie 49513
P.O. Box 10118 | Petach-Tikva 49001
Tel. +972-3-9221824
Fax +972-3-9240761
nava@ilan-gavish.com
www.ilan-gavish.co.il

M. K. Sales
Arimon 41 St. | Mosave Gealya 76885
Tel. +972-52-8283391
Fax +972-8-9366026
moti@mk-sales.com
www.mk-sales.com



Latvia
Sia Instro
Lacplesa 87 | Riga, 1011
Tel. +371-67-288546
Fax +371-67-287787
maris@instro.lv | www.instro.lv



Malaysia
Precisitech Sdn. Bhd
Plant 1, 15 Lorong Perusahaan Maju 11
13600 Perai | Prai Penang
Tel. +604-5080288
Fax +604-5080988
sales@precisitech.com.my
www.precisitech.com.my

SK-TEC
Automation & Engineering Sdn. Bhd
No. 54-A, Jalan PUI73,
Taman Puchong Utama
47100 Puchong
Selangor Darul Ehsan
Tel. +603-8060-8771
Fax +603-8060-8772
Jeffery.koo@sk-tec.com.my
www.sk-tec.com.my



Peru
ANDES TECHNOLOGY S.A.C.
Avenida Flora Tristan 765
Lima
Tel. +51-1-3487611

MAQUINAS CNC, S.A.C.
Los Jazmines #443, Lima
Tel. +51-1-2750649



Philippines
Bon Industrial Sales
35 Macopa St. | Sta. Mesa Heights
Quezon City
Tel. +63-2-7342740
Fax +63-2-7124771
bonind@skynet.net



Romania
S.C. Inmaacro S.R.L.
Industrial Machines and Accessories Romania
Avram Iancu Nr. 86
505060 Sacele-Brasov
Tel. +40-368-443500
Fax +40-368-443501
info@inmaacro.com
www.inmaacro.com



Saudi Arabia
Alruqee Machine Tools Co. Ltd.
Head Office
P.O. Box 36 57 | Alkhobar 31952
Tel. +966-3-8470449
Fax +966-3-8474992
mailbox2@alruqee.com
www.alruqee.net



Singapore
BALLUFF ASIA PTE LTD
18 Sin Ming Lane
#06-41 Midview City
Singapore 573960
Tel. +65-625-24384
Fax +65-625-29060
balluff@balluff.com.sg
www.balluff.com.sg

Eureka Tools Pte Ltd.
194 Pandan Loop, # 04-10 Pantech,
Industrial Complex | Singapore 128383
Tel. +65-687-45781
Fax +65-687-45782
eureka@eureka.com.sg
www.eureka.com.sg



Slovenia
MB-Naklo Trgovsko Podjetje D.O.O.
Toma Zupana 16 | 04202 Naklo
Tel. +386-42-771700
Fax +386-42-771717
mb-naklo@mb-naklo.si
www.mb-naklo.si



South Africa
AGM Maschinenbau Pty. Ltd.
42 Sonnenblom Road, East Village
Sunward Park 1459, Boksburg
Tel. +27-11-913-2525
Fax +27-11-913-2994
alfred@agm-machinery.com
www.agm-maschinenbau.co.za



South Korea
Mapal Hiteco Co., Ltd.
INA-502, Shiwaha Ind. Complex 1254-10,
Jungwáng-dong, Shihung-city
Kyunggi-do, 429-450
Tel. +82-1661-0091
Fax +82-31-3190-861
hiteco@kornet.net | www.hiteco.co.kr



Taiwan
Accudyna Engineering Co., Ltd.
2 F, No. 885, Youn-Chun East 1st. Rd
40877 Taichung City
Tel. +886-4-23801788
Fax +886-4-23805511
sales@accudyna.com.tw
www.accudyna.com.tw

Yonchin Enterprises, Inc.
5F, No. 100, Hsing Der Rd.
San Chung City 241, Taiwan
Tel. +886-2-2278-9330
Fax +886-2-2278-9320
yon.chin@msa.hinet.net
www.yonchin.com



Thailand
BRAINWORKS CO., LTD.
1161-162 Soi Watcharapol 2/7, Tharang
Bangkhen, Bangkok 10220
Tel. +66-2-0241470 to 1
Fax +66-2-0241472
chatchai@brainworks.co.th
www.brainworks.co.th



Ukraine
Center of Technical Support „Mem“ LLC
Malysheva str., 11/25
Dnipropetrovsk 49026
Tel. | Fax. +38-056-378-4905
maxim.bayer@gmail.com
www.ctp-mem.com.ua

No. 1

for safe, precise
gripping and holding.



J. Lehmann

Jens Lehmann, German goalkeeper legend,
SCHUNK brand ambassador since 2012
for safe, precise gripping and holding.
www.schunk.com/Lehmann

852 Minutes without a goal against
him in the Champions League

681 Minutes without a goal against
him in the national team

2 Intercepted penalties in the
2006 World Cup

1 Headed goal as a goalie

0 Defeats English Soccer Champion
and

More than **10** years
World's fastest depaneling machine

More than **2,000,000**
Sold precision toolholders

About **1,000,000**
Delivered SCHUNK grippers

More than **100,000**
Lathe chucks and stationary workholding
systems are in use worldwide

More than **16,000,000**
Sold standard chuck jaws

More than **75.000**
implemented hydraulic
expansion customer-specific solutions

SCHUNK Electronic Solutions GmbH

211 Kitty Hawk Drive
Morrisville, NC, 27560

919-572-2705

info@us.schunk.com

www.schunk.com



www.youtube.com/SCHUNKInc



www.twitter.com/SCHUNKInc



www.facebook.com/SCHUNK.america