

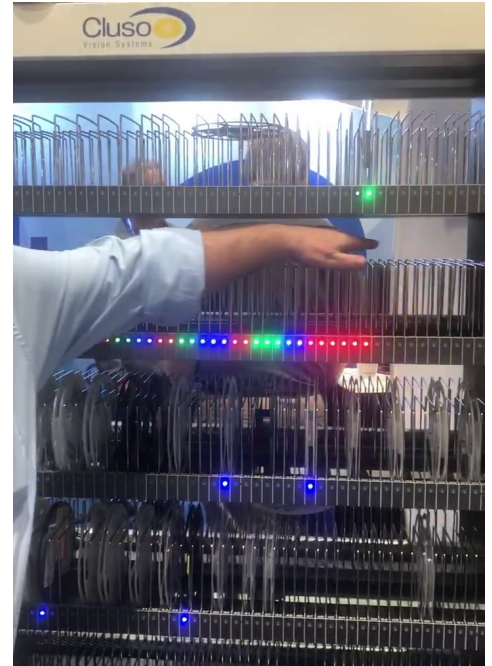


## **-The Newest Model of the Cluso InvMan series - S2 Series Fully Automatic Reel Storage trolleys as demonstrated at APEX 2020**

The S2 System Trolleys are completely compatible with the S1 System and may be used in conjunction together.

S2 Trolleys feature fully automatic detection of reel slot positions through the use of solid state IR Beams and Sensors, which eliminates the need for additional manual scanning when storing or removing component reels.

The picture to the right shows a reel shelf in demo mode capturing the movement of a hand running through the sensors demonstrating the automatic feature.



S2 Trolleys can be configured with a battery holder/recharger system for Li-Ion batteries for mobility in operation.

Reel slot positions maintain the dynamic reel storage of any reel width at any time to allow 100% slot usage regardless of the mix of reel widths. Continuously reconfigurable.

Power is supplied from standard wall outlet.

Wireless connection to Cluso server same as S1

Trolley Dimensions -

1225mm L x 420mm W x 2170mm H (w light towers)

1850mm H (w/o light towers)

Double the storage density of 7" reels from the S1.