

JBC

www.jbctools.com



REWORK SHOP

A complete tooling range

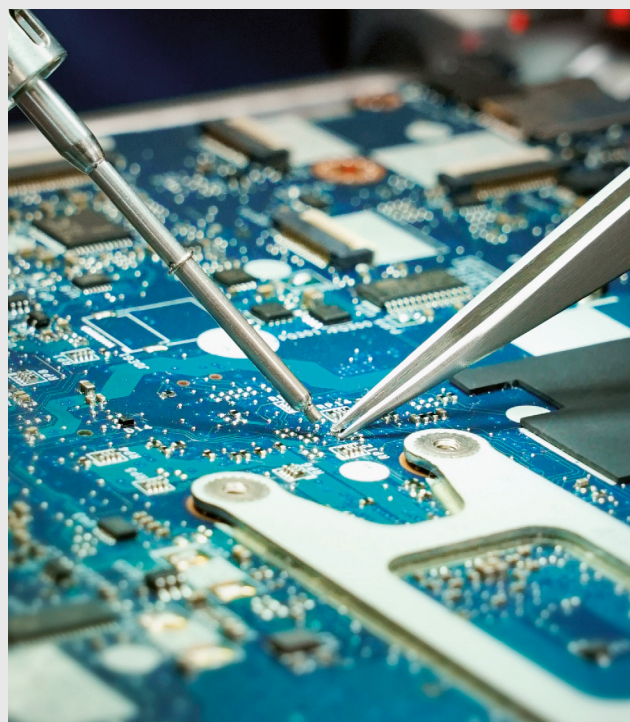
Complete tooling range for SMD rework

The miniaturization is the trend in the electronic market and the components are becoming smaller and smaller.

The new Rework Shop for **reworking small SMD components** - as 008004 - follows the worldwide trend of nano solutions.

Its complete range of tools offers high precision and maximum control (even under a microscope) allowing a **fast and efficient work** process.

All of the innovations of the Rework Shop feature the JBC Intelligent Heat Management, with the Sleep & Hibernation Mode.



PK Pick & Place Unit

Vacuum unit that allows **easy positioning and removal** of SMD components of different sizes.

It features 2 drive modes - a **continuous mode** for the removal of components with extractors/ tripods and an **activation mode** with pedal for precision work with the handpiece T260.



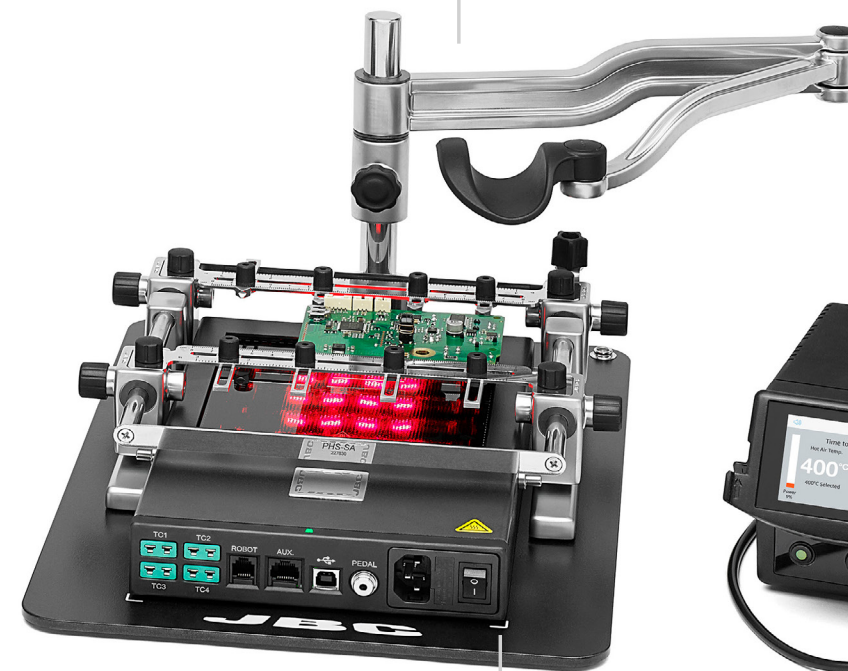
DPM Solder Paste Dispenser

Manual solder paste dispenser with a **large range of solder paste dispensing needles** for every need.



RHS Hands Support

An indispensable tool for **precision work** which provides a point of support very close to the working area when steady hands are required.



NASE Nano Station

The NASE Station is the best solution for soldering and rework of SMT components requiring the **highest precision**.

The NASE Rework Station works with the C115 Cartridge Range.

JNASE Hot Air Station

It is the **smallest hot air station** in the market.

JNASE is the perfect tool to rework the smallest SMD components - such as 0402, 0201, 01005 and 008004 - under a microscope.

It enables regulation of both flow and temperature at very low levels in order to avoid affecting adjacent components.



PHSE-K Preheater Set

The Preheater PHSE is used as a secondary heat source to reduce the amount of heat supplied by the main soldering tool, **reducing thermal shock to components and PCBs**.



COMPLETE REWORK STATION

RMSE

Rework station with Electric pump

The quickest and safest solution to solder and rework all kinds of SMDs. It consists of stackable modules and all the necessary tools and accessories to make your job easier. It includes the **DR560** Desoldering Iron, the **T245** General Purpose Handle and the **JT-TA** Hot Air Heater, among others.

The DDE is the control unit that manages up to **2 tools** simultaneously and it is compatible with 10 different JBC tools.



HOT AIR STATIONS

TESE

Hot Air Precision Station

A precision hot air Station capable of reworking small and medium SMDs. Includes **TE-TB** Tool.

JTSE

Hot Air Standard Station

A high powered hot air Station capable of reworking all types of SMDs. Includes **JT-TA** Tool.

PREHEATERS

Complete system for preheating multilayer PCBs and **ideal for repetitive soldering jobs.**

The Preheater is used as a secondary heat source to reduce the amount of heat supplied by the main soldering tool, **reducing thermal shock of components and PCBs.**

PHSE-K Preheater for **small/medium** PCBs

PHBE-K Preheater for **medium/large** PCBs

JBC
www.jbctools.com

